

BKT AL201 (Cobra)

Electronic swinghandle

AL201 is the next generation of electronic door handle for IT cabinets. It has a modular construction, which allows for easy expansion with additional functionalities. In the basic version, it is a mechanical handle that can be additionally equipped with an electronic opening module and an RFID card reader. The handle allows you to open cabinet doors in a standard mechanical way and through remote electrical control. It can work with any access control system. After connecting a dedicated or any reader with a Wiegand interface, the handle creates an autonomous access control system. Thanks to the installed cylinder insert, it can also be opened in an emergency using a key. Designed for use in cabinets installed indoors.



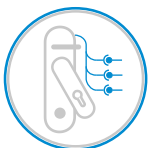
Modular construction
- mechanical handle
- electronic opening module
- RFID card reader



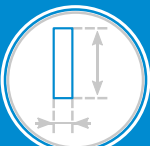
Can be used in any access control system.



Handle position sensor.
Operation indication via LED.



Three connectors providing control signals,
inputs for the optional RFID card reader and
a communication bus.
Power supply 10-24 V DC.



Installation in a standard 150x25mm
cut-out. Can be installed in a single
or multipoint locking system.



Emergency key opening.
Master key inserts available.

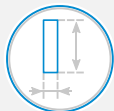


Compliant with the EMC Directive 2014/30/EU
and RED Directive 2014/53/EU.

Read more at website
www.bkte.pl

Modular construction

Mechanical handle ML201



Standard mechanical swinghandle opened with a key.
Requires a 150x25 mounting cut out.

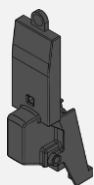


Available cylinders with various codes and in the master key system.



Possibility of expansion to an electronic handle using the AE201 module - it does not require disassembling the handle from the cabinet door.

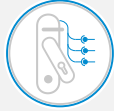
Electronic module AE201



Remote opening control from any external access control system.



Feedback to the access control system about opening the handle. Status indication via LED.



Three connectors for connecting control signals, an optional RFID reader and a communication bus. Power supply 10-24VDC.

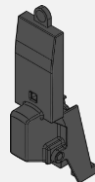
Electronic handle AL201



=



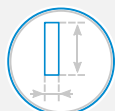
+



AE201

AL201

ML201



The electronic swinghandle has all the features of a mechanical handle and the electronic module built into it.

RFID card reader AR222 or AR232



Possibility of equipping the handle with an AR222 125 kHz or AR232 13.56 MHz RFID card reader.



RFID reader 125 kHz of Unique, HID Prox cards or cards 13.56 MHz type of Mifare, iClass, ICODE, NFC.

The reader has a Wiegand interface.

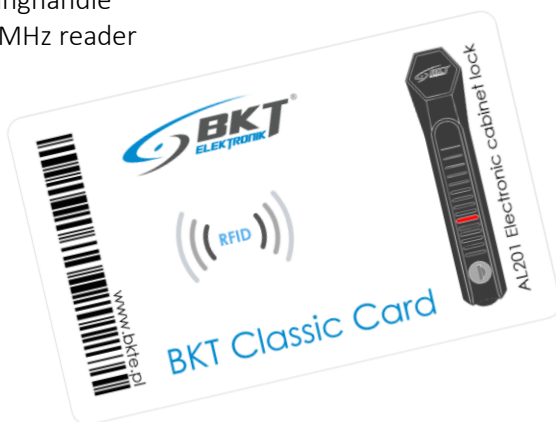


Possibility of connecting the reader to a swinghandle - creates an autonomous access control system or to any external control system supporting the Wiegand interface.

Dedicated cards

BKT Classic Card

- factory preprogrammed card with encrypted identifier
- works only with AL201 swinghandle with built-in AR232 13.56 MHz reader
- other readers read random identifier
- using random identifier makes it difficult to clone the card



BKT Mobile Card

- application that emulates card on the phone
- works only with AL201 swinghandle with built-in AR232 13.56 MHz reader
- currently the application is only available for Android phones

